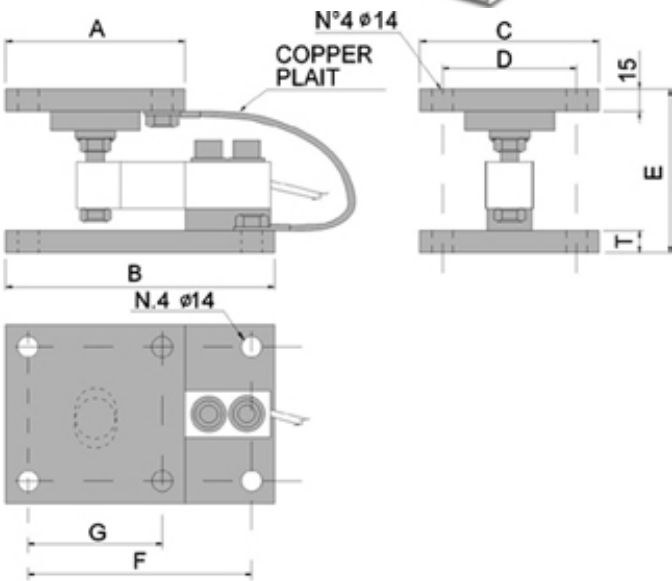
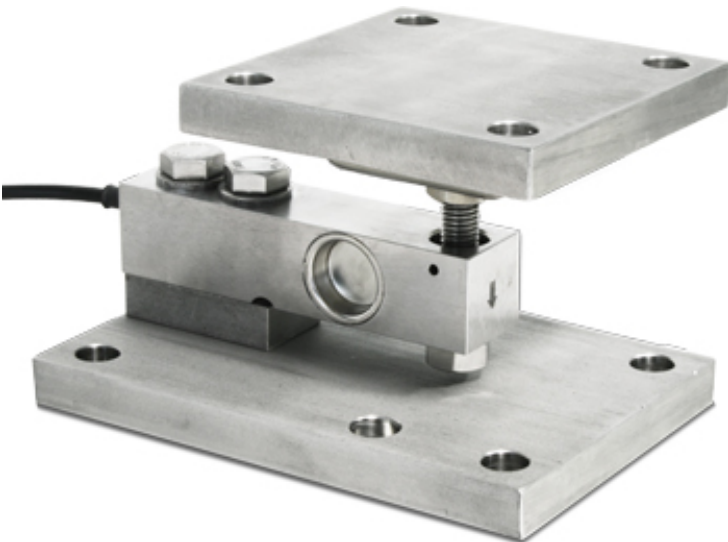


ASSEMBLY KITS FOR SHEAR BEAM LOAD CELLS



	A	B	C	D	E	F	G	T
KSB2	120	180	120	90	110	150	90	15
KSB5	120	215	120	90	150	185	90	20

dimensions in mm

Assembly kits for SB... shear beam load cells: accessories suitable for weighing hoppers, tanks, platforms, etc. The special articulation guarantees an excellent measuring accuracy also in the presence of dilatations and/or bending of the weighing structure. Furthermore it's possible to adjust the height for an optimal levelling of the structure to be weighed.

MAIN FEATURES

- EXECUTION IN AISI304 STAINLESS STEEL
- HINGE ADJUSTABLE IN HEIGHT
- MECHANICAL COMPENSATION OF THERMAL SWELLINGS AND TRANSVERSAL FORCES
- EASY TO INSTALL
- GUARANTEES THE MAXIMUM PRECISION OF THE LOAD CELL.



ATTENTION



- The KSB kit is designed for allowing the correct functioning of the cells and for obtaining the requested weighing accuracy, but does not give protection to the cell and neither to the structure.
- **The system designer and installer is obliged to search for the best solutions against lateral forces, capsizing, and overload taking into consideration the:**
 - knocks and vibrations;
 - wind shear;
 - seismic classification of the installation area;
 - support base consistence.

Available versions

Code	Description
KSB2	Kit of stainless steel plaits for assembling 1 shear beam load cells SB... series with capacity from 250 kg to 2000 kg under hoppers or tanks.
KSB5	Kit of stainless steel plaits for assembling 1 shear beam load cells SB... series with capacity from 2500 kg up to 5000 kg under hoppers or tanks.

Certification

Code	Description
DCATEXMECH	Declaration of ATEX conformity of whole, Ex II 2GD X system with relative whole system label, for mechanical structure with ATEX load cells (each cell must be certified with CCATEX option). ATEX CONFORMITY DECLARATIONS will be supplied in English.