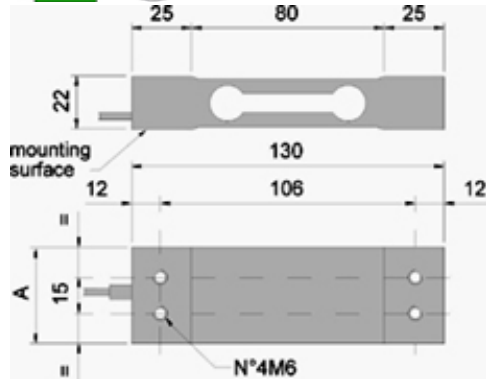
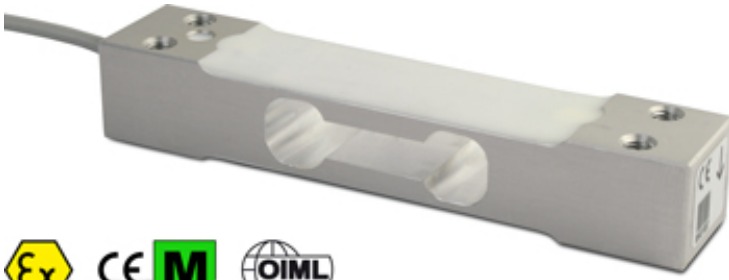


SPO SERIES SINGLE POINT LOAD CELLS



Code	Capacity kg	Dimension A (mm)
SPO3	3	25,5
SPO5	5	25,5
SPO10	10	25,5
SPO15	15	25,5
SPO20	20	25,5
SPO30	30	25,5

Wiring Code	
Color	Function
YELLOW	SHIELD
WHITE	OUTPUT +
BLUE	INPUT +
RED	OUTPUT -
BLA	INPUT -

Load cells for off center loads, suitable for example to build CE-M approved scales with a single load cell with maximum dimensions of 300x300 mm.

MAIN FEATURES







- C3 PRECISION CLASS
- OFF CENTER LOAD COMPENSATED
- ALUMINIUM ALLOY CONSTRUCTION
- IP65 PROTECTION
- MAX. CAPACITIES FROM 3 TO 30 kg
- FOR PLATFORMS WITH DIMENSIONS UP TO 300 X 300 mm
- SHIELDED CONNECTION CABLE
- OIML AND TEST CERTIFICATES AVAILABLE UPON REQUEST

TECHNICAL FEATURES

- Minimum load cell verification interval: $V_{min} = E_{Max}/4.000$
- Maximum number of verification intervals: $n_{LC} = 3000$
- Full Scale Output: $2mV/V \pm 10\%$
- Non-Repeatability $0,02\% F.S.$
- Temperature effect on zero: $0,004\% / ^\circ C$
- Temperature effect on full scale output: $0,0012\% / ^\circ C$
- Compensated Temperature Range: $-10^\circ C / +50^\circ C$
- Operating Temperature Range: $-10^\circ C / +50^\circ C$
- Creep error after 30 minutes: $0,015\% F.S.$
- Maximum tolerated excitation voltage: 20 VDC
- Input Resistance: $400 \pm 20 \text{ Ohm}$
- Output Resistance: $350 \pm 5 \text{ Ohm}$
- Zero Balance: $5\% F.S.$
- Insulation Resistance: $>2000 \text{ MOhm}$
- Safe Overload: $150\% F.S.$
- Ultimate Overload: $200\% F.S.$
- 4-wire shielded cable, 40cm long, 3,2mm diameter

EXTRAS AVAILABLE (at time of order)

- OIML R60 certificate (without surcharge)
- II 1GD ATEX Certificate for each load cell (with surcharge)
- Declaration of ATEX conformity of the system (for the code see the pages of the atex weight indicators and MB4 atex barrier kit)
- Assembly kit

Code	Max (kg)	Platform l x w Max (mm)	Masterpack 4 pcs
SPO3 	3	150x150	SPO3C
SPO5 	5	300x300	SPO5C
SPO10 	10	300x300	SPO10C
SPO15 	15	300x300	SPO15C
SPO20 	20	300x300	SPO20C
SPO30 	30	300x300	SPO30C

Certification

Code	Description
CCATEX	ATEX certificate for each load cell for the following categories: II 1G Ex ia IIC T6 (Ta -20÷+40°C) TX (Ta -20÷+65°C) Ga and II 1D Ex ta IIIC TX°C (Ta -20÷+40°C) TX°C (Ta -20÷+65°C) Da IP65. Complete with manual and ATEX CE CONFORMITY DECLARATIONS (available in EN, DE, FR and IT).
DCATEXMB4	Declaration of ATEX conformity of the whole, Ex II 2GD IIC T6 T125°C X system, with relative label of whole system, for NON ATEX weight indicator connected to MB4 Dini Argeo zener barriers, connected to mechanical structure with ATEX load cells (each cell must be certified with CCATEX option). ATEX CONFORMITY DECLARATIONS will be supplied in English.