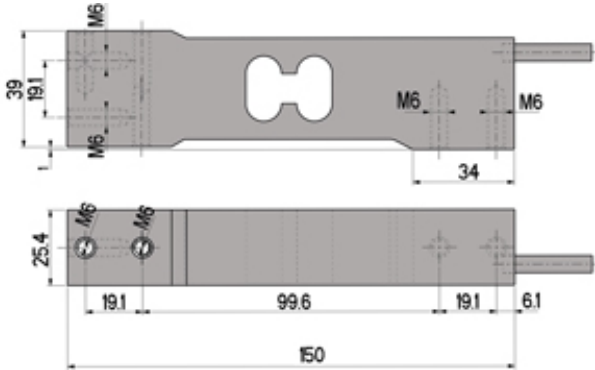
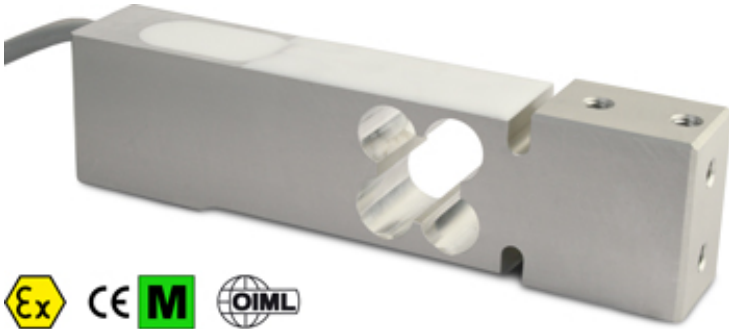


SPG SERIES SINGLE POINT LOAD CELLS



Dimensions (mm)

Wiring Code	
Colour	Function
YELLOW	SHIELD
WHITE	OUTPUT +
GREEN	SENSE +
BLUE	INPUT +
RED	OUTPUT -
GREY	SENSE -
BLACK	INPUT -

Load cells for off center loads, suitable for example to build CE-M approved scales with a single load cell; maximum platform dimensions of 600x600 mm.

MAIN FEATURES

- C3 PRECISION CLASS
- OFF CENTER LOAD COMPENSATED
- ALUMINIUM ALLOY CONSTRUCTION
- IP67 PROTECTION
- MAX. CAPACITIES FROM 10 TO 100 kg
- FOR PLATFORMS WITH DIMENSIONS UP TO 600 X 600 mm
- SHIELDED CONNECTION CABLE
- OIML CERTIFICATE AVAILABLE UPON REQUEST
- TEST CERTIFICATE AVAILABLE UPON REQUEST







TECHNICAL FEATURES

- Minimum load cell verification interval: $V_{min} = E_{Max} / 10.000$
- Maximum number of verification intervals: $n_{LC} = 3000$
- Sensitivity: $2mV/V \pm 10\%$
- Combined error: 0,03% of Full Span (F.S.)
- Temperature effect on zero: $0,0014\% / ^\circ C$
- Temperature effect on Full Span: $0,00175\% / ^\circ C$
- Compensated Temperature Range: $-10^\circ C / +40^\circ C$
- Operating Temperature Range: $-10^\circ C / +50^\circ C$
- Creep at nominal load in 30 minutes: 0,0166% F.S.
- Maximum excitation voltage without damage: 15 Vdc
- Input Resistance: 300..500 Ohm
- Output Resistance: 300..500 Ohm
- Zero Balance: $0 \pm 0,1\%$ F.S.
- Insulation Resistance: >2000 MOhm
- Mechanical limit load in service: 150% F.S.
- Destructive load: 300% F.S.
- Deflection at nominal load: 0,3mm
- 6-wire shielded cable, 3m long, 4,7mm diameter

EXTRAS AVAILABLE (at time of order)

- OIML R60 certificate (without surcharge)
- II 1GD ATEX Certificate for each load cell (with surcharge)
- Declaration of ATEX conformity of the system (for the code see the pages of the atex weight indicators and MB4 atex barrier kit)

Available models

Code	Max (kg)	Platform l x w Max (mm)	Masterpack 4 pcs
SPG10 	10	300x300	SPG10C
SPG15 	15	400x400	SPG15C
SPG20 	20	400x400	SPG20C
SPG30 	30	400x400	SPG30C
SPG50 	50	600x600	SPG50C
SPG100 	100	600x600	SPG100C

Certification

Code	Description
DCATEXMB4	Declaration of ATEX conformity of the whole, Ex II 2GD IIC T6 T125°C X system, with relative label of whole system, for NON ATEX weight indicator connected to MB4 Dini Argeo zener barriers, connected to mechanical structure with ATEX load cells (each cell must be certified with CCATEX option). ATEX CONFORMITY DECLARATIONS will be supplied in English.
CCATEX	ATEX certificate for each load cell for the following categories: II 1G Ex ia IIC T6 (Ta -20÷+40°C) TX (Ta -20÷+65°C) Ga and II 1D Ex ta IIIC TX°C (Ta -20÷+40°C) TX°C (Ta -20÷+65°C) Da IP65. Complete with manual and ATEX CE CONFORMITY DECLARATIONS (available in EN, DE, FR and IT).