

RSB DOUBLE SHEAR BEAM LOAD CELLS



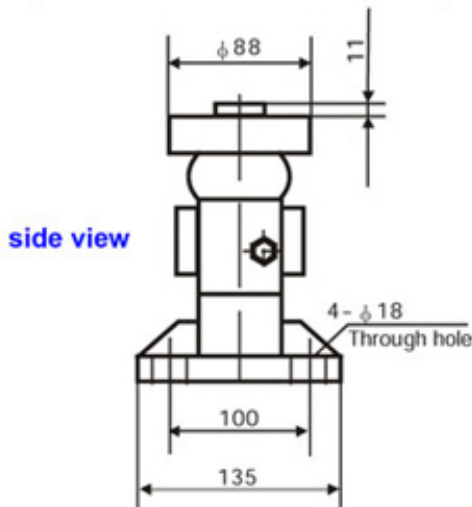
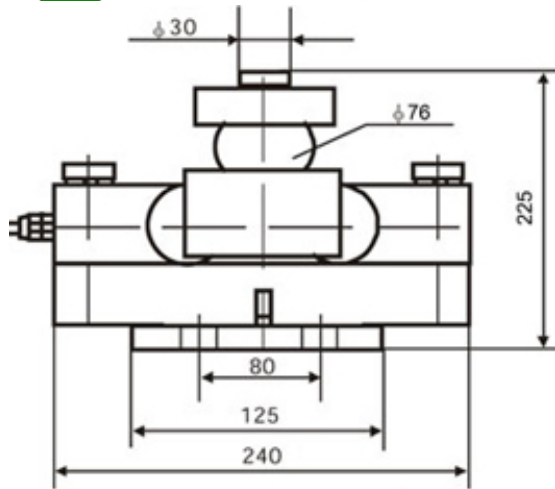
Double shear beam load cells particularly suitable for weighing weigh bridges, dosage systems, tanks, silos, etc., complete of support and oscillating sphere joint. CE-M approved.

MAIN FEATURES

- C3 PRECISION CLASS;
- EXECUTED IN NICKEL-PLATED STEEL WITH LASER SOLDERINGS;
- HIGH PRECISION AND LINEARITY ALSO WITH NON PERPENDICULAR LOADS;
- OPTIMISED FOR PARALLEL CONNECTION;
- IP68 PROTECTION DEGREE;
- UP TO 25000kg CAPACITY;
- SHIELDED TEFLON CONNECTION CABLE;
- TEST CERTIFICATE AVAILABLE UPON REQUEST.

TECHNICAL FEATURES

- Minimum verification interval: $V_{min} = E_{Max} / 10.000$;
- Maximum number of load cell divisions: $n_{LC}=3000$ (C3);
- Full Scale Output: $2mV/V \pm 0,2\%$;
- Temperature effect on full scale output: $0,0014\%FS/^{\circ}C$;
- Temperature effect on the zero: $\pm 0,0017\%FS/^{\circ}C$;
- Compensated temperature range: $-10^{\circ}C/+40^{\circ}C$;
- Operating temperature range: $-35^{\circ}C/+65^{\circ}C$;
- Creep error after 30 minutes: $0,02\%$ F.S.;
- Excitation voltage: from 5 to 18 VDC;
- Input Resistance: 700 ± 7 Ohm;
- Output Resistance: 700 ± 7 Ohm;
- Zero Balance: $\pm 1,5\%$ F.S.;
- Insulation resistance > 5000 MOhm;
- Safe overload $> 150\%$ F.S.;
- Maximum overload 300% F.S.;
- 4-wire shielded cable, 12m long.



side view

Wiring Code	
Colour	Function
--	SHIELD
GREEN	OUTPUT +
RED	INPUT +
WHITE	OUTPUT -
BLACK	INPUT -

EXTRAS AVAILABLE

- II 1GD ATEX Certificate for each load cell
- Declaration of ATEX conformity of the system (for the code see the

Available versions

Code	Max (kg)	Masterpack 4 pcs
RSB25C3	25000	RSB25C3C

Options to be specified at time of order

Code	Description
CCATEX	ATEX certificate for each load cell for the following categories: II 1G Ex ia IIC T6 (Ta -20÷+40°C) TX (Ta -20÷+65°C) Ga and II 1D Ex ta IIIC TX°C (Ta -20÷+40°C) TX°C (Ta -20÷+65°C) Da IP65. Complete with manual and ATEX CE CONFORMITY DECLARATIONS (available in EN, DE, FR and IT).
DCATEXMB4	Declaration of ATEX conformity of the whole, Ex II 2GD IIC T6 T125°C X system, with relative label of whole system, for NON ATEX weight indicator connected to MB4 Dini Argeo zener barriers, connected to mechanical structure with ATEX load cells (each cell must be certified with CCATEX option). ATEX CONFORMITY DECLARATIONS will be supplied in English.