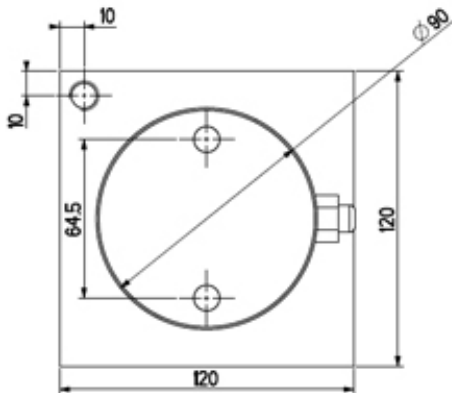
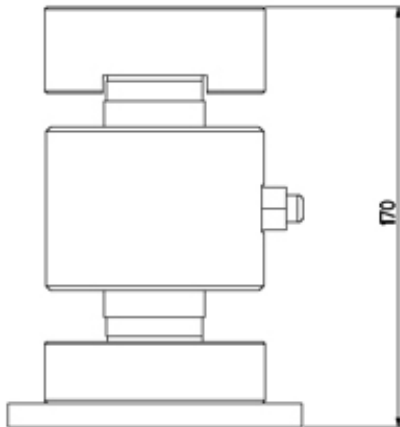


"RCD" SERIES COLUMN LOAD CELLS



RCD cell, with assembly kit.



Digital version of compression load cells, 4000 divisions, ideal for CE-M approved weigh bridges, tanks, silos, etc. STAINLESS STEEL execution, with IP68 protection, fitted with "anti rat" shielded cable.

MAIN FEATURES

- C4 PRECISION CLASS.
- MADE IN STAINLESS STEEL.
- IP68 PROTECTION.
- 30.000 kg CAPACITY
- "ANTI RAT" 15 m SHIELDED CABLE.
- TEST CERTIFICATE AVAILABLE UPON REQUEST.

TECHNICAL FEATURES

- 200.000d full load capacity resolution
- Combined error of Full Scale Output: $\pm 0,017\%$
- Operating temperature range: $-20^{\circ}\text{C}/+60^{\circ}\text{C}$
- Power supply voltage from 7,5 to 16 VDC
- Conversion: 24 bit
- RS485 connection.
- Safe overload: 150% F.S.
- 6-pole armoured cable.

WIRING CODE

- Wiring code of the standard cable colours.

RCD cell connections	
Colour	Function
Input	
WHITE	INPUT +
BROWN	INPUT -
Input signal	
GREY	A+
PINK	B-
Output signal	
GREEN	A+
YELLOW	B-

EXTRAS AVAILABLE

- Assembly kit.

Available Versions

Code	Max (kg)	Masterpack 4 pcs
RCD30C4	30000	RCD30C4C

Assembly kit

Code	Description
KRCA	Kit of 2 jointed cups for selfalignment.
JB8QD	Digital load cells junction box in ABS, IP67 protection degree, with 8 + 1 fairleads for connection with up to 8 digital load cells.